



## TelHouse access control solutions. Expertise you can trust.

### Leading provider of premium access control systems

With state-of-the-art technologies in access control, surveillance, and a diverse range of communications systems that enables systems integration over IP networks, TelHouse deliver complete security solutions for businesses, government establishments, and organizations.

There are several types of access control systems including digital keypads, biometrics (fingerprint and iris recognition), proximity systems, swipe and smart cards. Access control can involve controlling a single door to multiple access points across a large, complex site.



### Main benefits of TelHouse access control Systems include:

- Simple operation
- 24/7 technical support
- Simple set up
- Low maintenance
- Vandal-proof
- Complete scalability should your business needs change



## Our services: Lobby Gate System

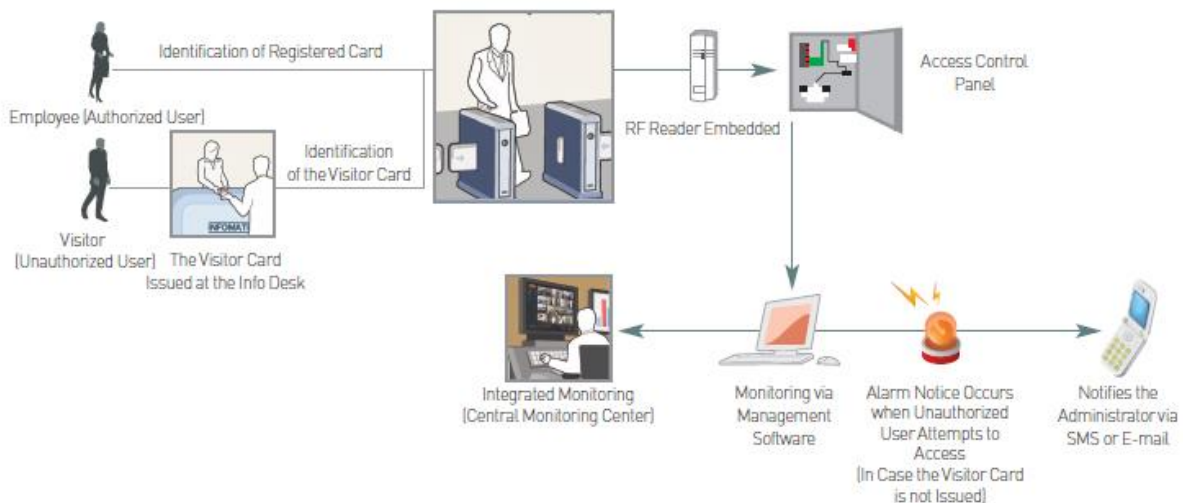
Lobby gate system is designed to prohibit the access of the unauthorized users from entering the building as it permits entry to the authorized users only.



### System Benefits:

- Maximizes the efficiency through quick processing of a large group of people
- For an effective access control management of employees and visitors
- Seamlessly prohibits the tailgating, the act of getting into the area by following the authorized user.

### System Configuration





## Visitor management system

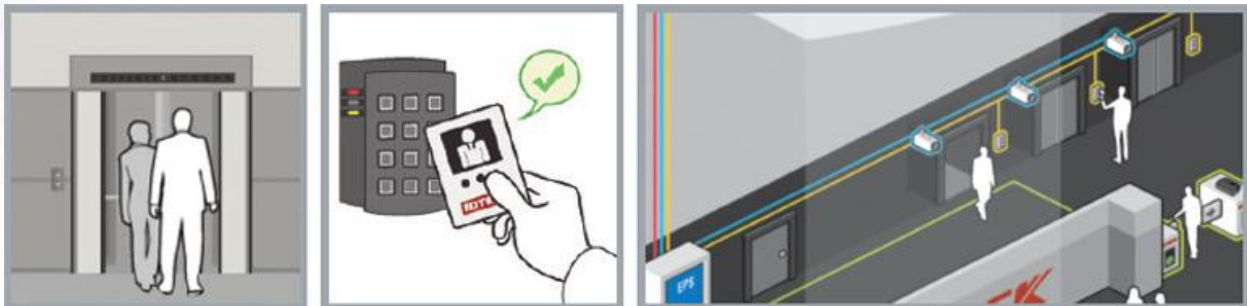
Visitor management system is designed to verify the identification of the visitor prior to granting access to the premises and to screen the fire arms and other weapons with security check box in areas where it requires high level of security.

### System Benefits:

- Increases the security level as it screens the entry of the unauthorized user
- Sets an expiry period on the visitor card for thorough management of the visitor
- Keeps an extensive records of the visitor to cope with the emergency situation
- Limits the visitors from entering certain areas of the building to increase the security level
- In the central monitoring center a picture of the visitor will be showed on the screen, when he but his card on the ID scanner to check with the stored picture in the system database to removing the possibility of fraud.

## Elevator control system

The elevator users are allowed entry of only the authorized floors and if the user is not identified, the floor button does not activate at all, which could be used to eliminate the unauthorized entries of unauthorized users.

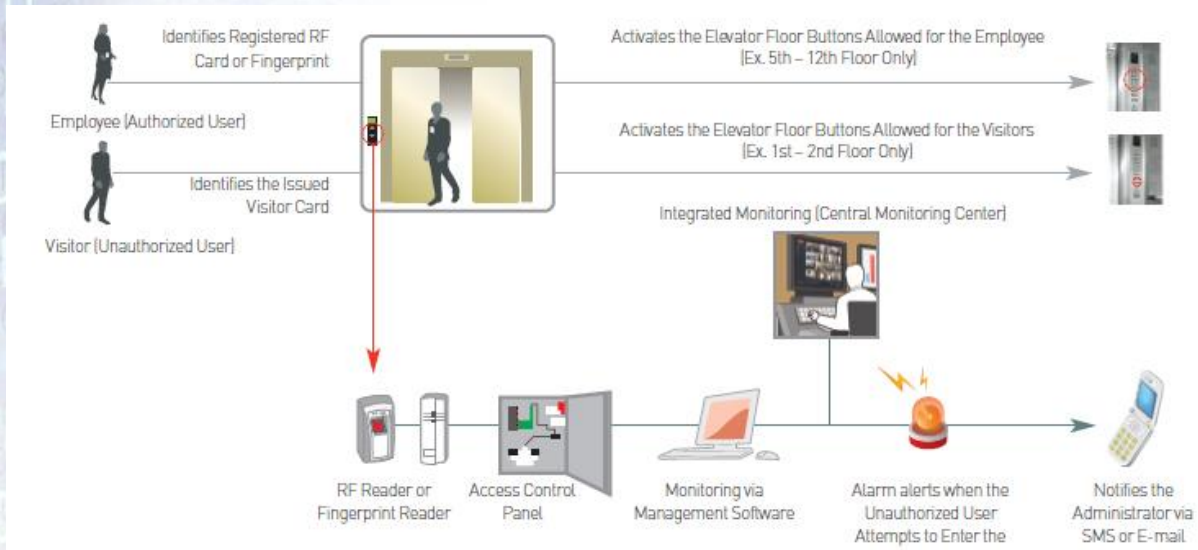


### System Benefits:

- Prohibits the entry of unauthorized personnel
- Increases work efficiency of the employees as solicitors are not permitted into work area
- In the case of duress in the elevator, the victim can notify the administrator about the situation  
Allows the administrators to take immediate action by sending secret / silent alarm signal to the monitoring center in case an intruder threatens an authorized user to use the elevator (Duress Mode)

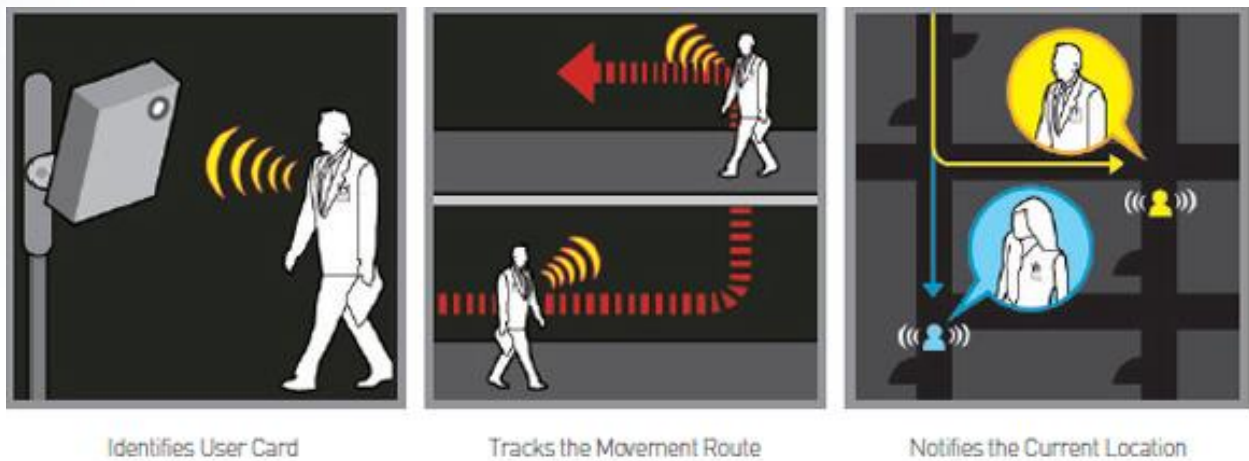


## System Configuration



## Personnel tracking system

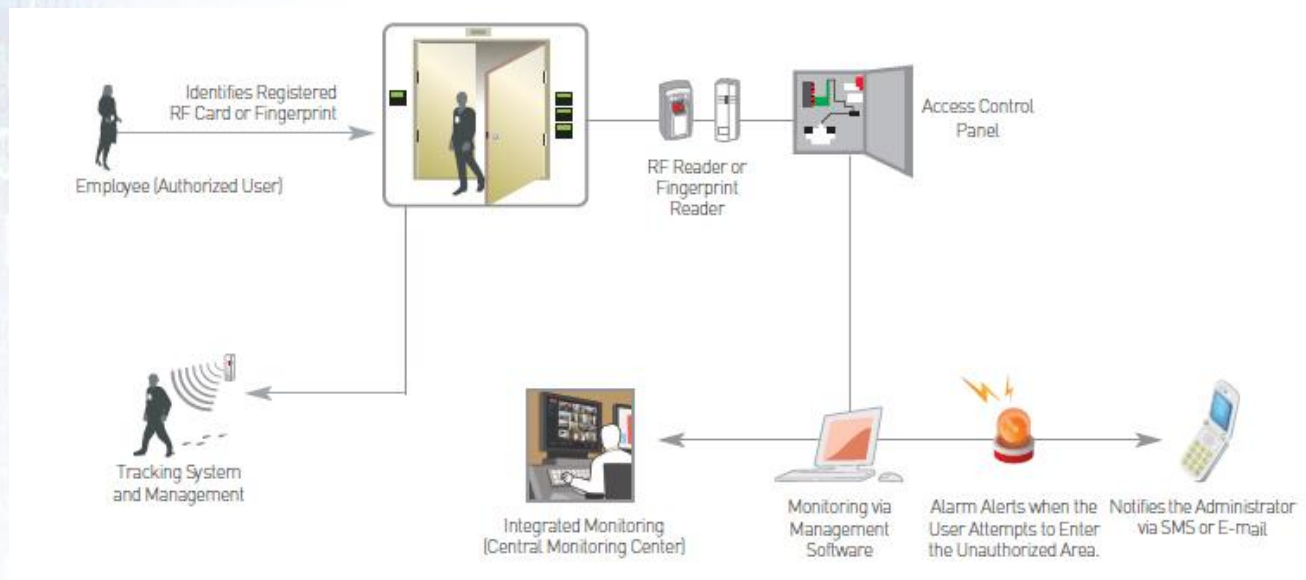
Personnel tracking system is designed to track the location or movement of the user or item, similar to LPS system to allow the administrators to take immediate action by providing exact location of the personnel in emergency situation.



## System Benefits:

- Allows the administrators to take immediate action by providing exact location of the personnel in emergency situation
- Strengthens security as it provides the location and movement tracks of the visitor
- User and vehicle access status management to integrate with BAS system for effective building management

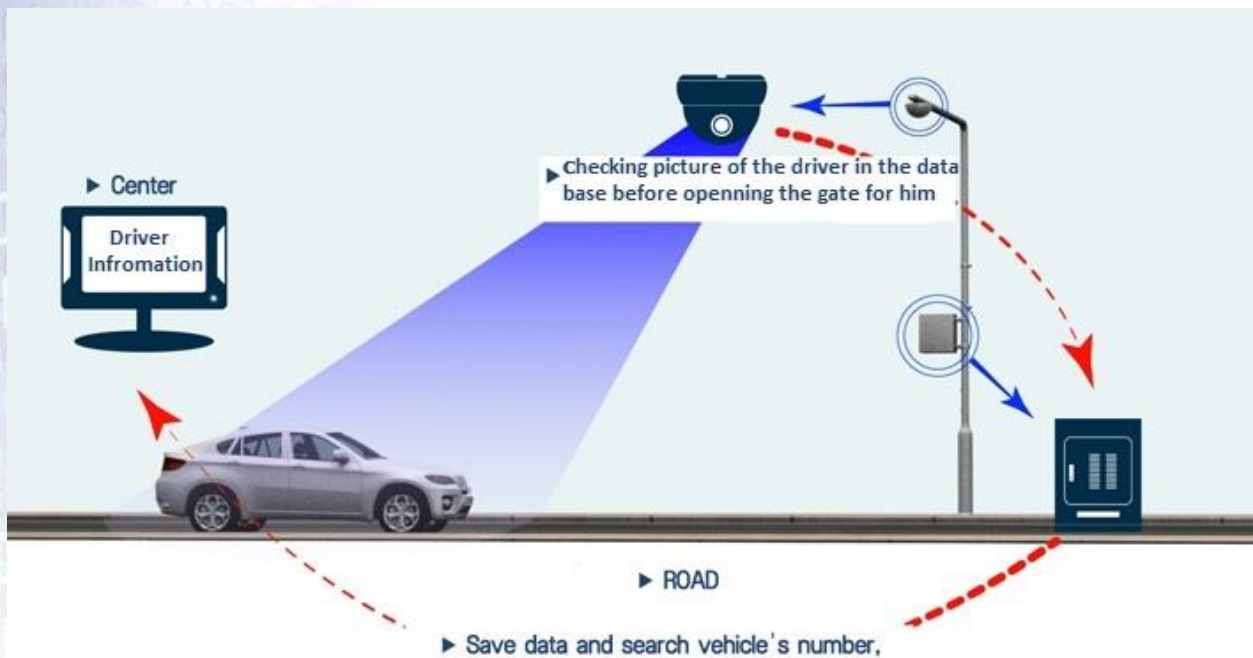
## System Configuration



## Vehicle Management System

Stable Long Range Reading Guaranteed, Weatherproofed for Indoor / Outdoor Use, Life-Time Use of Active Cards with Replaceable Batteries, Management uses Automatic Vehicle Identification to reduce long queues and assist gate guards in verifying access control or provide hands-free convenience with automated gates. Using accurate timestamps for entry and exit it is possible to track and compare travel times, removing the possibility of human error or fraud.

First step, checking and validating the Vehicle information, driver picture and details, if it matches the security database information open the gate for the park for the car.



### System Benefits:

- Cuts down the Card Recognition Time as the Long Range Reader Identifies the Card from the Long Distance
- Increase in security of the access system to the main building park while removing the possibility of human error or fraud.
- Increase in Management Efficiency with Integration with Other Parking Related Systems
- Enhanced Convenience as It Doesn't Require the Opening of Vehicle Window for the Card Identification



## TelHouse support services

---

Our comprehensive tiered support will keep your access system running

To meet your specific technical requirements, we provide three tiered levels of support that range from standard through to full support. All of these support services are delivered by a team of in-house highly-skilled professionals who are available 24x7x365.

Incident and service requests can be raised by telephone or through the customer portal and to ensure that your issue is adequately resolved, we also provide you with a single point of contact.